

# HEALTH & SAFETY PLAN

Indiana Area School District

July 28, 2020  
Reapproved on  
Sept. 14, 2020  
Revision #1  
September 21, 2020  
Revision #2  
December 14, 2020



## TABLE OF CONTENTS

---

**Prevention (pgs. 4 & 5)**

---

**Facial Coverings (pgs. 9-10)**

---

**Vistors/Volunteers (pg. 11)**

---

**Social Distancing (pgs. 12-14)**

---

**Cleaning, Ventilation (pg. 15)**

---

**Health Services (pgs. 16-19)**

---

## BACKGROUND

Beginning June 3, 2020, Indiana Area School District has received numerous communications from the Pennsylvania Department of Education (PDE) with guidance regarding the reopening of school for the 2020-21 school year. This document serves as a starting point for our staff and families to review to gain an understanding of our preparations (health and safety) for the upcoming year.

Given the dynamic nature of the COVID-19 pandemic, PDE's guidance will evolve as further research, data, and resources become available. Thus, this document is subject to change over the next several days, weeks, and months. Your patience and understanding are greatly appreciated.

Please take some time to review the document and feel free to call upon us if you have any questions and/or concerns. **As a reminder, our opening and ability to remain open depends on our school community's willingness to follow mask and distance rules and keep our school related cases down.**

Sincerely,

Mr. Michael J. Vuckovich, Superintendent of Schools



# IASD PANDEMIC TEAM

## Indiana Area School District

According to the preliminary guidance issued by the PDE, each school district is required to identify a “pandemic coordinator” and/or “pandemic team.” Indiana Area School District took a collaborative approach in developing our plan. See below for the team composition and their roles.

- Superintendent & Pandemic Coordinator – Mr. Michael J. Vuckovich
- Academic Division Lead – Mr. Robert Heinrich
- SEL and Special Education Lead – Mr. Justin Zahorchak
- Safety Coordinator & Transportation Lead – Mr. Michael Travis
- Facilities – Mr. Greg Trout
- Athletics – Mr. Greg Lezanic
- Administration – Mr. Jared Cronauer, Mr. Wade McElheny, Mr. Doug Johnson, Dr. Mike Minnick (also Health Services lead), Mr. Kevin Edmondson, Ms. Erin Eisenman (also Guidance Services lead), Ms. Krista Sevajian (also Child Care co-lead), Ms. Kelly Ubrani (also Child Care co-lead), & Mr. Don Springer
- School Psych Services – Dr. Angela McMasters & Ms. Shelly Wright
- IAEA Leadership – Mr. Paul McCue & Mr. Rob Stewart
- Health Services Department – Ms. Beth Mauk, Ms. Lindy Stossel, Ms. Brenda Pearce, & Ms. Tracy Pecora
- IRMC – Dr. Patrick Shannon
- IRMC/School Physician – Dr. Christina Lubold
- IRMC – Ms. Amanda Augustine



# PLAN UPDATE: COMMUNITY TRANSMISSION

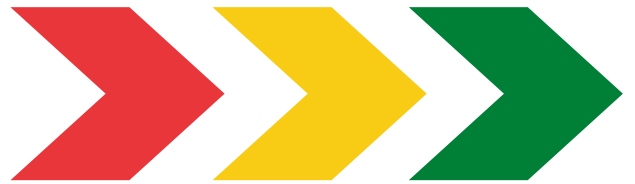
PDE/DOH previously issued guidance regarding instruction model recommendations related to the level of community transmission. In reviewing the current community transmission rates, local and state health experts have noted the correlation between the return of IUP students to campus and the rise in county incidents. Additionally, the Commonwealth released the most recent Mathematica report for districts to review while making their decisions on instructional models. In the report, there were several key findings in the main body that provide rationale for the District to maintain the the current hybrid model including the following:

- *Cumulative infection rates in elementary schools are likely to be consistently lower than in secondary schools employing the same operating strategies, even if they are similar in size, because younger children are less likely to be infected.*
- *Precautions such as requiring masks can measurably reduce infection spread in schools.*
- *Hybrid operating approaches in which groups of students attend school in person part-time dramatically reduce the total number of likely infections in the school. Simulation results suggest that under a hybrid approach with precautions (including wearing masks, eliminating additional mixing of students outside of class, and putting six feet of distance between desks), most infections coming from outside the school will produce zero additional infections in the school.*
- *If all students are coming to school daily, temporarily closing the building every time an infection is detected modestly reduces the total number of infections. But temporary closures are far less effective in reducing infection spread than using a hybrid operating strategy from the start, and closures disrupt school schedules unpredictably.*
- *If the school is operating in part-time hybrid mode, quarantining the close contacts of individuals with detected infections is likely to keep the school's infection rate low; temporary closures reduce the number of days that students can attend with no demonstrable benefit in further reducing infections.*
- *Under part-time hybrid operating strategies, students come to school far fewer days by design, but because hybrid operation keeps infection rates low, the typical student in a secondary school using a hybrid approach (in a community with a low or moderate infection rate) is likely to experience little or no unplanned disruption in the days they can come to school. Students in school buildings operating full-time, in contrast, are more likely to be sent home for quarantine.*

The District has also taken action to mitigate the potential spread of the virus from IUP to IASD. We worked with IUP's Education department to limit the number of students, and to implement a more rigorous daily screening protocol for IUP students already in our schools. IUP students who fail to adhere to the protocol and safety expectations will be barred from entering our schools. We are partnering with IUP leadership to monitor the university's transition rates and will take further action if the numbers continue to rise.



## PREVENTION



According to the CDC, COVID-19 is mostly spread by respiratory droplets released when people talk, sing, cough, or sneeze. It is thought that the virus may spread to hands from a contaminated surface and then to the nose or mouth, causing infection. Therefore, personal prevention practices (such as handwashing & staying home when sick) and environmental cleaning and disinfection are important principles that are embedded into our plans at every level. Prevention and education will be a major component of our Health and Safety Plan. This includes the posting of signage in highly visible locations (restrooms, classrooms, cafe, and hallways) that promote everyday protective measures and how to stop the spread of germs. Additionally, these expectations will be embedded, where applicable, into our School Wide Positive Behavior Interventions and Supports (SWPBIS) matrices.

The Health Services Department will assist in this area by training staff on these preventative measures and practices. Furthermore, they will assist staff in educating students on these techniques by providing informational material and/or video tutorials that can be used to support our overall efforts. At the elementary level, each building will build in frequent handwashing time for students as well incorporate explicit lessons in class to promote proper hygiene practices. At the secondary level, signage and lessons (where appropriate) of proper hygiene techniques will be utilized. Please visit [our website](#) or contact your child's school nurse to learn more about some of the preventative measures you can practice at home with your child.



# PREVENTION CONTINUED

We are asking parents to conduct daily symptom screening each morning before the school day, as well as in the evening (Approximately 7 PM was recommended) upon return from school. We are asking that no child with symptoms be sent to school on a bus or brought to school. [Click here to view a simple self-screener checklist we are asking parents to complete.](#) [For any questions regarding this form or how to use it, please contact your child's school nurse.](#)

Please know that all district staff will screen themselves for symptoms prior to leaving for work and will stay home if they are sick. We are all in this together.

Temperature screening **will be required upon entrance** to school for students and staff. Staff conducting screening have been trained by the Indiana Regional Medical Center (IRMC). Students will be screened by trained staff as they exit their buses. Also, each school will have a designated area for parent-drop off/walker arrival so all students can be screened prior to entering school. Please contact your child's principal to learn more about site specific plan on how they will conduct screenings and/or click on the links below.

Students and staff will consistently be made aware of the signs and symptoms of COVID-19. Students will be escorted to the nurse's office immediately if they present with a temperature over 100 degrees or if symptomatic. Again, we are asking families to help us in the mitigation of the spread of the virus by completing a self-assessment before and after school each day using the form provided above. We understand this can be viewed as redundant, but your help is needed in ensuring the safety of our school community. As we said before, we are all in this together.

The wearing of face coverings will be required of staff and students while in school at all times based on the Governor's orders. Each school has built a plan for how they will conduct regular and frequent face covering breaks to help our staff/students meet this requirement. Finally, students and staff are required to wear face coverings in the hallways during class exchange.

## Screening/Drop Off Procedures by School

- [Ben Franklin](#)
- [East Pike](#)
- [Horace Mann](#)
- [Eisenhower](#)
- [Junior High](#)
- [Senior High](#)

## Face Covering Breaks

- [Ben Franklin](#)
- [East Pike](#)
- [Horace Mann](#)
- [Eisenhower](#)
- [Junior High](#)
- [Senior High](#)

# TESTING & SCHOOL CLOSURE DUE TO COVID-19

Current guidance from the CDC does not recommend testing of all students and staff prior to their initial return to school or work. Therefore, the District is not currently planning to offer or require COVID-19 testing of its students and employees prior to school opening. The Department of Health recommends testing in the presence of symptoms, and/or when an individual has been exposed to someone with COVID-19. The School District will not conduct any on-site COVID-19 testing for those with symptoms or exposure to COVID-19. Staff and students' families should consult with health care providers concerning further details on testing.

## **Classroom, School or Building Closure**

Guidance regarding the closure or dismissal of a classroom, school and/or other District facility due to COVID-19 will be **provided by DOH**. The decision to close or dismiss students and/or staff from any District facility does not rest with the District. We are hopeful that the DOH will work closely with the District's appointed designee(s) to make the determination that best addresses the specific circumstances. Decisions about closures will be made carefully, and with the health, safety and needs of our students and families in mind. As a situation evolves and decisions are made, communications will be sent out to all necessary stakeholders. See below for the framework the District will use when determining when and how long to close school(s). This decision will be made along with the DOH and PDE.


On August 13, 2020, the Pennsylvania Departments of Health (DOH) and Education (PDE) provided schools with recommendations for use in consultation with public health staff when making decisions related to school procedures following a case of COVID-19 in a school. When a case of COVID-19 is identified in a school setting, public health staff from DOH or the County or Municipal Health Department (CMHD) will work with the IASD administrators to provide guidance and advice related to cleaning and disinfecting, contact tracing and quarantine recommendations, and closing certain areas of the school or the entire school building if necessary. When an entire school is recommended to close, lengths of closure time will vary by the number of cases. This allows public health staff the necessary time to complete case investigations and contact tracing and to provide schools with other appropriate public health advice like cleaning and disinfecting. Furthermore, it allows the District to remain open by monitoring local, relevant data (# of cases in our schools) as well as adhering to the recommendations of the DOH and PDE.



# IASD FRAMEWORK FOR SCHOOL CLOSURE

The chart below is based on the guidance developed by the Departments of Health and Education. We have amended the framework as presented below. **It is important to note that a significant and/or widespread outbreak may require IASD to move to a more remote-based instructional model more quickly as required by the DOH and/or PDE.** DOH will provide proactive consultative assistance to school entities should such an outbreak occur.

As you are well aware, this is a fluid situation and ever changing. As a result, we are recommending that families make arrangements accordingly should we be forced into total remote learning by the Department of Health and/or Department of Education. The YMCA of Indiana County has a middle school program available for middle school students for those families interested. Feel free to call the YMCA at 724.463.9622 for more information.

IASD FRAMEWORK FOR SCHOOL CLOSURE DUE TO COVID-19		
		
ONE PERSON IDENTIFIED IN 14 DAYS	2-4 PEOPLE IDENTIFIED WITHIN 14 DAYS	5+ PEOPLE IDENTIFIED WITHIN 14 DAYS
<ul style="list-style-type: none"><li>• The school does not need to close</li><li>• IASD will clean area(s) where the identified individual spent time.</li><li>• Public health staff will direct identified individual to isolate and close contacts to quarantine.</li></ul>	<ul style="list-style-type: none"><li>• Close school(s) for 3-7 calendar days and clean area(s) where the identified individuals spent time depending on the direction of the DOH.</li><li>• Public health staff will direct identified individuals to isolate and close contacts to quarantine.</li></ul>	<ul style="list-style-type: none"><li>• Close school(s) for 14 calendar days and clean the entire school(s).</li><li>• Public health staff will direct identified individuals to isolate and close contacts to quarantine.</li></ul>

# WHAT IF THERE IS A CONFIRMED CASE IN SCHOOL?

If a confirmed case of COVID-19 should occur, we will follow all of the directives and protocols established by the Department of Health. Consistent with PA regulations for communicable diseases, if an individual in a school or office is confirmed, suspects, or has been in contact with someone confirmed to have COVID-19, the District's point of contact will notify the Department of Health (DOH) and receive direction on next steps that could include, and are not limited to, whether to quarantine the class or school; providing necessary information for DOH to conduct contact tracing; and when individuals can resume school or work.

Additionally, consistent with both notification requirements for other communicable diseases and legal confidentiality the school District will follow DOH regulations for exposure to a communicable disease. In the event that a student needs to quarantine and is asymptomatic, the student will be required to continue to attend school remotely and their attendance will be marked as though they were attending face-to-face each day.

***At the current time, we are awaiting additional guidance, however, below are the protocols we have created (subject to change, depending on decisions made by the Department of Health and/or Department of Education).***

## **Protocols:**

- Department of Health will be notified by the individual's doctor and/or testing laboratory.
- Letter will be sent home to families that is authored by the Department of Health and issued via the school.
- Contact tracing will be done by the Department of Health to determine who needs to be quarantined.
- Students, staff, and any close contacts identified will be home quarantined per the Department of Health.
  - Close contact is defined as someone who was within 6 feet of an infected person for at least 15 minutes.
- **The area/department and or the District COULD be closed per the Department of Health if confirmed cases/positive tests are substantial.**
- If staff is tested for COVID-19 and the results are negative, the staff must provide COVID-19 test result whether positive or negative to the District.



# FACIAL COVERINGS

## Indiana Area School District

On August 17, 2020, all schools in the Commonwealth were informed by the Pennsylvania Department of Education that masks/facial coverings are required to be worn by staff and students even when social distancing can be met. The American Academy of Pediatrics (AAP) released an update to their guidance strongly recommending children age two and older should wear face coverings at all times to help mitigate the spread of the COVID-19 virus. Prior guidance the Department of Education released in collaboration with the Pennsylvania Department of Health (DOH) stated students in schools could remove their face coverings as long as six feet of social distancing could be maintained. **Given this recent change from the AAP, and consistent with the Secretary of Health's Face Covering Order issued on July 1, 2020, DOH is requiring students wear face coverings at all times while in school, even when six feet of social distancing can be achieved.**

Thus, employees, students, visitors and contractors are required to wear a face mask or other approved face covering that covers their **mouth and nose** while on District grounds, with limited exceptions. Mask-breaks will be conducted as needed.

Acceptable masks include disposable surgical masks, cloth masks purchased or made from household items, and gaiters. **Clothing and household items (like scarfs, t-shirts, sweatshirts, or towels) are not acceptable in original form for use as masks on District grounds.** Exceptions to mask requirements will be made if wearing a mask is not possible due to medical conditions, disability impact, or other health or safety factors. **Face shields, which cover the eyes, nose, mouth, and chin, will be a viable alternative to masks for those with medical, behavioral or other conditions precluding them from wearing masks.**

**Submission of the appropriate documentation by a licensed medical provider will be required stating that the person is exempt from wearing any form of face covering in order to provide reasonable accommodations.** A Health Issue, for the purpose of wearing masks, must be documented under either ADA or IDEA for students. Upon receipt of the appropriate medical documentation, our staff will work with parents to make accommodations through either a 504 plan or Individualized Education Plan. Our goal is to work with each and every family in these situations to make the most appropriate accommodations possible.

# FACIAL COVERINGS CONTINUED

## Indiana Area School District

Wearing face masks or shields is required for everyone at all times on school buses unless you are exempted under the previous circumstances and conditions explained. While in school, students will be instructed when they may take “mask breaks” and remove their masks, such as during mealtimes, and when outdoors and more than six feet apart from other people.

We understand that some families may want to provide their child with a homemade facial covering to wear during the day. Please review the CDC guidelines listed below regarding this item.

### Guidelines

- fits snugly but comfortably against the side of the face
- completely covers the nose and mouth
- is secured with ties or ear loops
- includes multiple layers of fabric
- allows for breathing without restriction
- can be laundered and machine dried without damage or change to shape

[Click here](#) to read CDC's guidance on how to WASH facial coverings.

[CDC - Considerations for Wearing Face Coverings](#)

[CDC - Video on facial coverings](#)

[Click here](#) to read CDC's guidance on how to WEAR facial coverings.





# VISITORS & VOLUNTEERS

We love having our families visit our schools. Sadly, due to the pandemic, we are going to limit the number of visitors we have in our schools until further notice as a safety precaution. **This includes the cancellation of families attending their child's school to have lunch with them.** This is an extremely difficult decision, but we feel we must err on the side of caution based on the guidance issued from the Pennsylvania Department of Education and Department of Health.

We recognize that students will need a variety of support services throughout the year and we will permit these service providers to enter our buildings with the understanding they will be screened (similar to staff/students) prior to entering the building and will be required to wear a face covering at all times.

We recognize how important it is to have our families involved and engaged. Limited seating for assemblies and events will occur prior to the start of school year, which complies with the Governor's orders. Once school is in session, there will be no in-person assemblies/parties that include the public until further notice. Required meetings and conferences will be limited to specified rooms to limit exposure and to ensure our maintenance staff can properly disinfect following each meeting. Please contact your child's principal for additional information.

# SOCIAL DISTANCING: CLASSROOMS



Most schools in America were not built to allow for classroom/learning space occupancy with 6 feet of separation among students and staff throughout the day; the buildings at IASD are no different. Although it was challenging, we have secured 6 feet of social distancing in our classrooms to comply with the recommendations of the Department of Health.

We have required teachers to declutter their classrooms and remove as much excess materials as possible to meet the Governor's social distancing orders. Students will be reminded frequently to keep their distance from each other, to wash/sanitize their hands, and to limit the sharing of items. We will teach our students about health and safety on a daily basis and follow current PDE and PA Department of Health mandates to the maximum extent possible.

IASD has implemented the occupancy-limitation plan most preferred by our parents based on the parent survey: the Monday and Tuesday – Thursday and Friday cohort model we previously explained. By reducing the number of students in the building under this model/phase, we would be able to ensure the suggested 6 feet of separation among students and staff. We will follow all health and safety mandates from the state authorities.

## BUILDING PLANS

Click on your child's school to learn more about their building plan for social distancing in the classroom.

- [Ben Franklin](#)
- [Horace Mann](#)
- [East Pike](#)
- [Eisenhower](#)
- [Senior High](#)
- [Junior High](#)





# SOCIAL DISTANCING: CAFE

## Social Distancing: Cafeterias

Each building will be sure to have students spaced out 6 feet apart during lunch and not exceed the 250 individuals in a room limit set forth by the Commonwealth. Each school will build in time for students to wash/sanitize hands prior to and after lunch. IASD will also have hand sanitizing dispensers in the cafeterias as well for staff and students' use. Where possible, schools will provide alternative dining locations to students with elevated risk. Please contact your child's principal if or visit the building level plans on the right hand side if you have any additional questions.

## DAILY FOOD SERVICE SAFETY PLAN



### 1 STAFF HEALTH CHECKS

All employees will be screened daily with temperature checks and a health screening checklist prior to starting their shift.



### 2 BARCODE SCANNERS

Barcode scanners will be used in place of keypads to make purchases in the cafeteria in order to eliminate touching of surfaces.



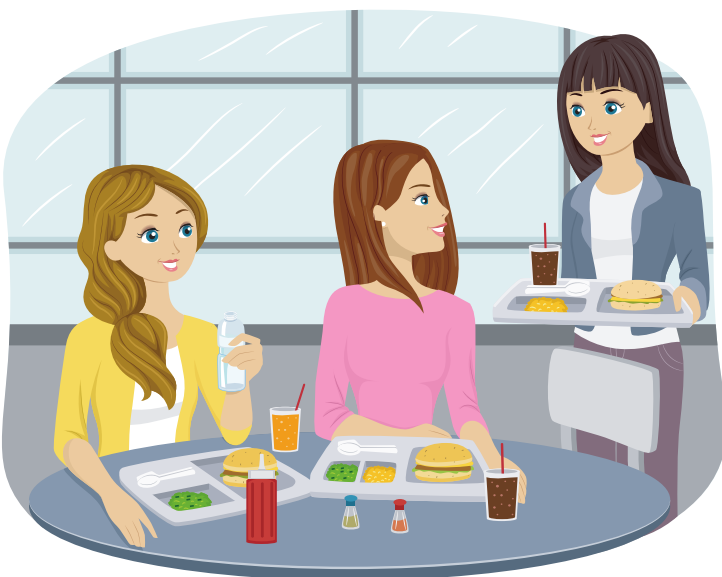
### 3 FOOD SERVICE SAFETY

Plexiglass will be installed in certain service areas. Staff members will wear face masks or face shields when prepping, cooking, and serving food.



### 4 FOOD AND SERVICE ITEMS

Food items will be lidded / covered whenever possible and disposable items will be used for service.



## BUILDING PLANS

Click on your child's school to learn more about their building plan for social distancing in the cafeteria.

- [Ben Franklin](#)
- [East Pike](#)
- [Eisenhower](#)
- [Horace Mann](#)
- [Jr. High](#)
- [Sr. High](#)

# SOCIAL DISTANCING: HIGH TOUCH POINTS/ITEMS

Most schools in America were not built to allow for classroom/ learning space occupancy with 6 feet of separation among students and staff throughout the day; the buildings at IASD are no different. Our schools were designed to promote social interaction, cooperative learning, and teamwork. Although it will be challenging, we will do our absolute best to enforce the practice of all of the health mandates of the Commonwealth's medical experts in a manner that is appropriate for children.



## Social Distancing: High Touch Points/Items

---

Limiting the sharing of materials among students will occur as a standard safety precaution. Each building will do its best to limit the number of individuals in classrooms and other learning spaces, as well as interactions between groups of students to the maximum extent possible. This is not entirely feasible at all times as our schools were not built for isolation and social distancing. Additionally, each school will do its best to stagger the use of communal spaces and hallways. This will become very difficult at the secondary level. As a result, we will continue to educate students and staff on best practices to help prevent the spread of germs and diseases.

# CLEANING, DISINFECTING, SANITIZING, & VENTILATION

Cleaning, sanitizing, disinfecting, and ventilating learning spaces, surfaces, and any other areas used by students (i.e., restrooms, drinking fountains, hallways, and transportation) is a major focus of IASD's preventative strategies to create a healthy and safe environment for all.

As part of our preventative measures, IASD staff use the Victory brand sprayers to clean our classrooms on a frequent basis. This includes a thorough cleaning and spraying of each classroom every day. Additionally, our bus company has a standard operating procedure to clean the buses daily. All drivers are required to spray their bus with disinfectant spray after both AM and PM runs. This procedure has been in place for several years. The spray is to be misted throughout the bus as well. The spray is supplied by the terminal. STA, Inc. uses Neutral Disinfectant Cleaner from State Industrial Products. Please visit our website to learn more about some of the measures we are taking to keep our buildings clean, sanitized, and disinfected to the best of our ability.

All classroom unit ventilators and air handlers will have a minimum of four air filter changes per school year. The volume of airflow in the classroom unit ventilators will be increased by turning the speed of the fan to the "high" setting. We are required to introduce outside air into our buildings through our heating, ventilating, and air condition systems. Our upgraded HVAC systems are able to provide more fresh air than required due to having carbon dioxide sensors which automatically increase the amount of outside air when the building load requires an increase. The outside air settings will be adjusted above the required limits, but not to jeopardize our ability to heat and cool the spaces with the equipment's ability to operate efficiently. We will also be increasing the run time on building exhaust fans to assist during air change over.

## DAILY CLEANING/DISINFECTING EFFORTS

See below for a list of the strategies and tactics we are utilizing to provide our staff and students with a healthy learning environment to the best of our ability.

- 2-hour cycle of cleaning/disinfecting during the school day for high-frequency areas: handrails, doorknobs, restrooms, light switches, and other touchpoints
- 2-hour cycle of cleaning/disinfecting during evening shift and use of electrostatic sprayers and/or thorough cleaning of handrails, doorknobs, restrooms, countertops, desks, tables, and telephones for high traffic areas
- Use of QT3 and/or BruTabs for disinfecting with electrostatic sprayers
- Disinfectant wipes provided to all classrooms
- Frequent scheduled hand washing/sanitizing for staff and students
- Adding water bottle fillers to the water fountains in each building

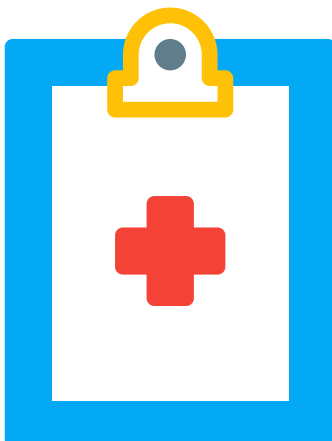


# HEALTH SERVICES

The IASD Health Services Staff have worked relentlessly to prepare for the 2020-21 school year. As we prepare for a full reopening, safety for all remains a high priority. Feel free to reach out to the District's Health Services Staff if you have any questions. We are in this together! We will all need to work together to keep everyone safe. The next several pages are dedicated to some specific procedures, processes, and protocols that the Health Services Department will implement to help keep everyone safe.

## What are we doing to protect vulnerable populations?

Students who are being treated for asthma, diabetes, or have any other health concerns, including pregnant students, should ask their health care professional about returning to school. The doctor should indicate, in writing, if the student should return to school in person, receive home bound instruction, use IDEAL instruction, synchronous learning opportunities, wear a specific type of face covering, or any other specific instructions.



## PROTOCOLS FOR ISOLATION

### OVERVIEW

A student will be isolated and sent home as soon as possible based on chart below

#### Group A: one symptom

- Temperature 100.0 degrees Fahrenheit or greater
- Cough
- Shortness of breath
- Difficultly breathing
- New loss of taste or smell

#### Group B: two symptoms

- Chills
- Fatigue
- Muscle / Body aches
- Headache
- Sore throat
- Congestion, runny nose
- New loss of taste or smell
- Nausea, Vomiting, Diarrhea



*Based on evaluation of student symptoms, nurse assessment, and clinical judgement*

# HEALTH SERVICES

## When To Keep Your Child Home From School (general guidelines)

There are times when you are not sure whether you should keep your child out of school.

Below is guidance on when to keep your child home from school and criteria for their return to school after an illness. If your child returns to school and has any symptoms you will be notified to pick up your child.



### SYMPTOMS / GUIDELINES

- A fever of 100.0 or higher. A student must be fever free for 24 **hours WITHOUT medication** such as Tylenol or Motrin before returning to school.
- Diarrhea - more than 1 time in a 24 hour period.
- Vomiting - more than 1 time in a 24 hour period.
- A blistery sore or rash, especially if accompanied by a fever. Students will need to be cleared of any contagious illness by their physician before returning to school.
- Body aches, chills and sweats, dry cough, fatigue/weakness, and nasal congestion.
- Keep your child at home if he/she has **HEAVY** nasal congestion or has a persistent cough. If your child has a fever with a persistent cough, they will need to be fever free for 24 **hours WITHOUT medication**, and overall symptoms must improve before they will be allowed to return to school.
- If your child has been diagnosed with strep throat, pink eye, ringworm, or impetigo, etc., he/she must be on antibiotics 24 hours before returning to school and must be fever free.
- If your child requires pain medication stronger than Tylenol or ibuprofen, he/she may not attend school.

**If your student is diagnosed with COVID-19, he or she will be required to remain home from school until they are fever free for 24 hours (without medication), symptoms have improved, AND it has been 10 days from the onset of the first symptoms.**



## Self-Screening At Home & Return to School from COVID-19

[Click here to view a simple self-screener checklist we are asking parents to complete.](#) For any questions regarding this form or how to use it, please contact your child's school nurse.

## INDIANA AREA SCHOOL DISTRICT



# Enhanced Health Services Guidelines

**Scenario #1 - No Symptoms**

- Stay Home From School and Activities: Not Applicable
- Return to School After: Not Applicable

**Scenario #2 - COVID-19 Symptoms**

- Stay Home From School and Activities: Yes
- Return to School After: Individual should be tested for COVID-19.
  - If test result is **NEGATIVE**, return to school fever free for 24 hours without medication and improving symptoms or a doctor's note
  - If test result is **POSITIVE**, follow return to school guidance for scenario #3

**Scenario #3 - Positive COVID-19 PCR Test WITH Symptoms**

- Stay Home From School and Activities: Yes
- Return to School After:
  - 24 hours with NO fever (without the use of medication) AND
  - Improvement in symptoms AND
  - 10 days since symptoms first appeared

**Scenario #4 - Positive COVID-19 Test WITHOUT Symptoms**

- Stay Home From School and Activities: Yes
- Return to School: 10 days after PCR test was collected
  - If symptoms develop during 10 days, follow return to school guidance for scenario #3

**Scenario #5 - Close Contact to an Individual WITH Symptoms**

- Individual with symptoms should be tested for COVID-19.
- If test result is POSITIVE, follow return to school guidance for scenario #3

**Scenario #6 - Close Contact to an Individual WITHOUT Symptoms**

- Individual should be tested for COVID-19.
  - If individual tests positive for COVID-19, follow return to school guidance for scenario #3





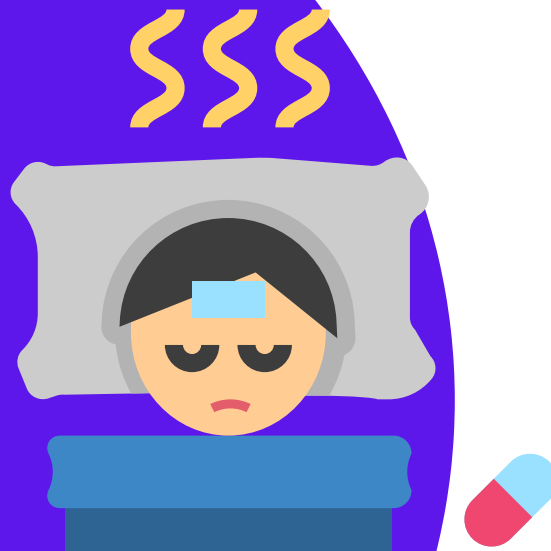
# Notifications

- Staff and students or parents should notify the school if an absence is due to COVID-19.
- The school is required to notify the Indiana County Health Department to report any confirmed case of COVID-19 while maintaining confidentiality. The Indiana County Health Department will conduct an investigation and contact tracing as well provide appropriate guidance.
- The Indiana County Health Department will notify the school if staff or students test positive, are exposed, or become ill and have to self-isolate.
- If you think you have been exposed to COVID-19 and develop a fever and symptoms, call your healthcare provider for medical advice. Notify the school immediately. It will be determined if others who may have been exposed need to be notified, isolated and/or monitored for symptoms. If a positive case of COVID-19 is diagnosed, contact tracing will be implemented by the DOH.
- The Indiana County Health Department will **NOT** notify the general community if staff or students test positive, are exposed, or become ill and have to self-isolate.

## Questions?

Please contact the IASD Health Services

- Ben Franklin  
Ms. Lindy Stossel
  - Email: [lstossel@iasd.cc](mailto:lstossel@iasd.cc)
  - Phone: (724) 465-5637 ext. 4143
- East Pike - Ms. Beth Mauk
  - Email: [bmauk@iasd.cc](mailto:bmauk@iasd.cc)
  - Phone: (724) 463-8567 ext. 3136
- Horace Mann  
Ms. Brenda Pearce
  - Email: [bpearce@iasd.cc](mailto:bpearce@iasd.cc)
- Eisenhower  
Ms. Lindy Stossel
  - Email: [lstossel@iasd.cc](mailto:lstossel@iasd.cc)
  - Phone: (724) 465-5637 ext. 4143
- Junior High - Ms. Tracy Pecora
  - Email: [tpecora@iasd.cc](mailto:tpecora@iasd.cc)
  - Phone: (724) 463-8568 ext. 2044
- Senior High - Ms. Brenda Pearce  
Ms. Brenda Pearce
  - Email: [bpearce@iasd.cc](mailto:bpearce@iasd.cc)
  - Phone: (724) 463-8562 ext. 1310



# TRANSPORTATION

## Social Distancing on the Bus

Getting students to school during the pandemic will require ingenuity, a diversity of approaches, and additional resources. Transportation to and from school is one of the single greatest challenges to successful school reopening. Existing school bus capacities, availability of trained and reliable drivers, and resources to expand transportation services on short notice are extremely limited. **Please notify the District before school starts if your child will not be riding the bus in the mornings and/or afternoons by contacting Mr. Mike Travis at [mtravis@iasd.cc](mailto:mtravis@iasd.cc).**

Physical distancing, such as spacing students one to a seat and skipping rows between students per CDC guidelines, is one of many strategies proposed to reduce transmissions on school buses. Yet these strategies could reduce ridership by 75 percent or more, necessitating multiple runs if all students must come to school every day. Such approaches might be infeasible from financial and staff resource perspectives.

As a result, some students may have modified schedules. ***IASD will make every effort to limit bus capacity to two students per seat. This may involve adjusted schedules for certain residence areas within the district that normally have a higher ridership and are in close proximity to schools.***

***Students who are provided transportation through the District will be required to adhere to the following rules and expectations:***

- ***Families conduct daily screening of their children at home, before their children leave for school.***
- ***Facial coverings are required to be worn while riding any District transportation.***
- ***Hand sanitizer will be applied to children's hands before boarding the vehicle.***
- ***Members of the same household will sit together on the bus.***
- ***Revised procedures for loading and unloading will be implemented.***
- ***Enhanced cleaning protocols will be followed.***



# TRANSPORTATION

## Preventative Measures

STA, Inc. is taking steps to ensure safety through daily sanitization of school vehicles, increased inspections, and employee safety protocols. As part of company protocols developed by STA, Inc., ventilation will be increased on buses by opening windows when possible.

Additionally, bus loading and unloading procedures, including back to front boarding, front to back unloading, and family members seated together, will be utilized to reduce contact between students. Based upon initial survey information from district families, the percentage of students utilizing bus service will also aid in reducing actual ridership.



### Questions?

**Please contact IASD  
Transportation & Safety  
Director - Mr. Mike Travis  
Email: [mtravis@iasd.cc](mailto:mtravis@iasd.cc)  
Phone: (724) 463-7591 ext.  
3507**



# MUSIC CLASSES & CHORALE

## Preventative Measures

There is documented evidence of substantial spreading of COVID-19 during musical events caused by the possibility of droplet and fomite (objects or materials likely to carry infections) transmission. **Preventive strategies include modifying, limiting, or eliminating activities within the music program on a case-by-case basis.** Whenever feasible, students will be assigned their own instruments, and the sharing of instruments woodwind and brass instruments will be prohibited. Students rarely touch another student's instrument unless they are assisting with tuning or other problems during rehearsal. The practice of sharing wind or brass instruments is strictly prohibited. Even with the switching of mouthpieces, we believe this will decrease the likelihood of spreading infectious diseases.

Every instrument will be wiped down before the start of school, not just bows that are reassigned. Our Music staff will inspect and teach students how to care for and maintain healthy instruments.

**We will require students to wear facial coverings during chorale classes.** Indoor rehearsals will be only be conducted in large areas such as the auditorium where students can be spaced out. Staff will be instructed to move music and band-related courses outside whenever feasible. Music and band classes be organized into smaller pods, minimizing the number of students for sectional or group rehearsal to provide for social distancing. Students will sanitize hands before and after handling instruments.

### Building Plans

**Click on your child's school to learn more about their building plan for preventative measures in the music classrooms.**

[East Pike](#)

[Ben Franklin](#)

[Eisenhower](#)

[Horace Mann](#)

[Junior High](#)

[Senior High](#)



# DRIVER'S EDUCATION

## Preventative Measures

Students will receive a health check screening form the instructor prior to entering the Driver's Education vehicle and at the beginning of any classroom instruction that is held after school. In order to provide behind-the-wheel training to students in driver's education, the following procedures must be followed:

- Allow only two students and one instructor per vehicle.
- Face coverings must be worn, as social distancing is impossible in this situation.
- Eating and drinking in the vehicle is prohibited.
- Windows will be open whenever possible.
- No stops will be made during the training that are not applicable to driver's education to reduce the amount of time in the vehicle.
- Complete hand washing with soap and water or hand sanitizer, as appropriate, before and after driving and, at the minimum, upon completion. Hand sanitizer will be placed in each vehicle.
- The steering wheel, seats, door handles, seat belt fastener, controls/dials that the driver would come in contact with, and keys, etc. will be cleaned and disinfected in between each behind-the-wheel session.
- Classroom and student driving instruction will continue during the Yellow Phase.
- Classroom instruction will continue via remote learning during the Red Phase. Student driving will be postponed or cancelled during the Red Phase. Enrollment refunds will be given on a prorated basis for any cancelled student driving sessions.



# CHILD CARE COLLABORATION

## Expanding Partnerships

If the District falls back into the Yellow Phase, we will not be able to have all of our students in the building at one time. As a result, we have reached out to our Early Learning Providers in the area to gather their input, as well as work with them to provide your child with **continuous care and instruction** that is aligned with the mission and vision of IASD.

The District has invested a great deal of resources in improving our literacy program to be aligned with the science of reading and best practices. IASD will provide technical support, if needed, to our Early Learning Providers to help them implement our curricula, which includes Heggerty and Wilson Foundations.

Additionally, IASD will provide technical support in the area of social-emotional learning. This includes the use School-Wide Positive Behavior Interventions and Supports (SWPBIS) systems approach. The illustration to the right explains our coordination efforts.



## CHILD CARE COLLABORATION

### Informed Learning Options - IASD

#### Promoting Alternative Thinking Strategies



IASD is working with area Early Learning providers to discuss our current social-emotional programming. IASD used the evidence-based program titled Promoting Alternative Thinking Strategies (PATHS). Our team is supporting our local providers by providing technical assistance in this curriculum so the topics, methods, and strategies can be reinforced on the days child care services are needed.

### SWPBIS

IASD uses systems approach for establishing the social culture and behavioral supports needed for a school to be an effective learning environment for all students. Our team is supporting our local providers by providing technical assistance in this area to help reinforce what we are doing while students are in school. This includes: defining and teaching positive social expectations, acknowledging positive behavior, on-going collection and use of data for decision-making and providing a continuum of intensive, individual intervention supports to name a few.



#### Literacy Support

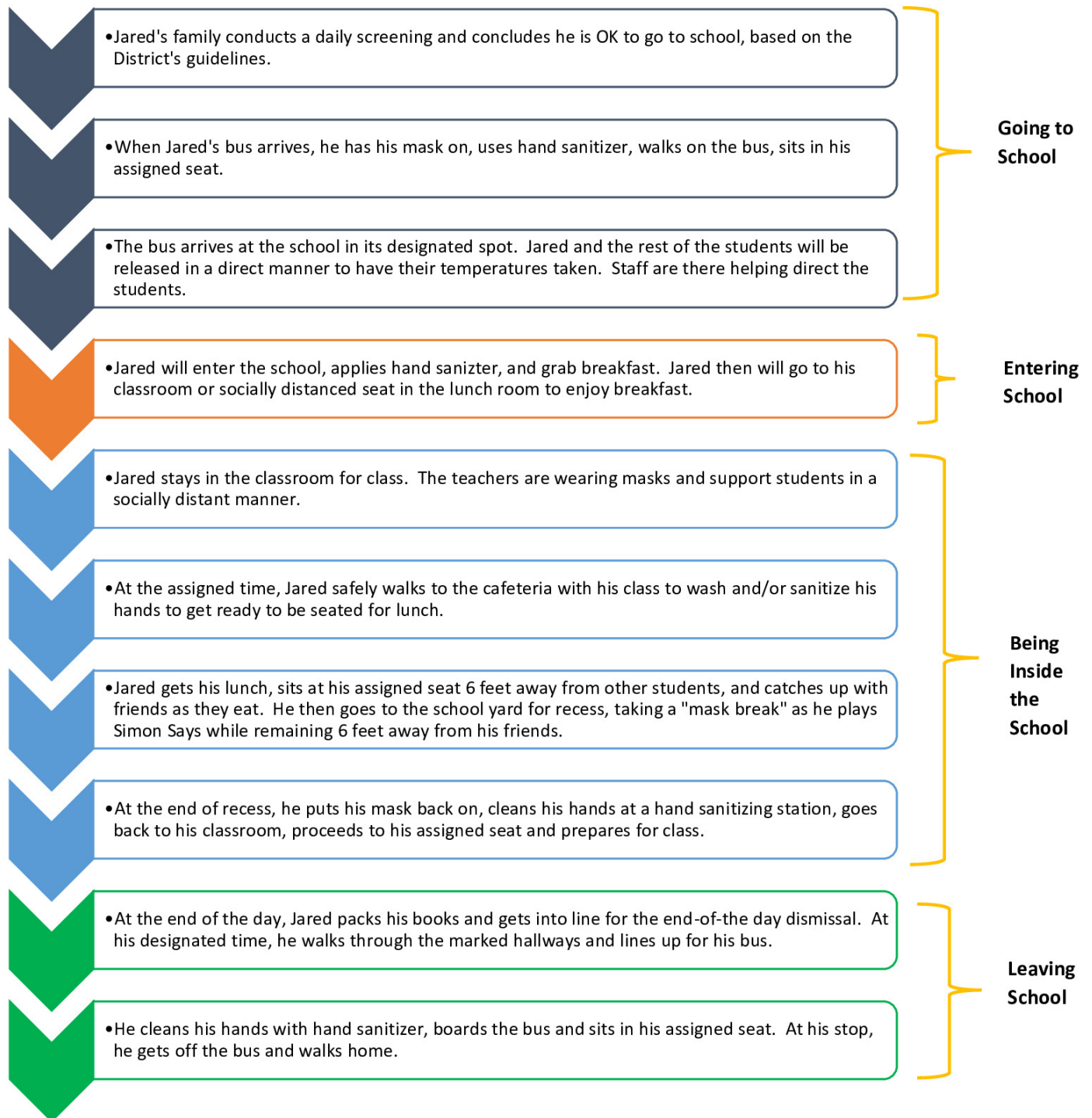


The IASD reading program is designed to provide all students with an engaging learning environment rooted in the scientific evidence of reading best practices, which includes high-quality instruction in oral language, phonemic awareness, phonics, fluency, vocabulary and reading comprehension. The vision is to demonstrate fidelity to the core reading program by providing scientifically-based reading instruction and expecting reading proficiency for ALL students. Our team is supporting our local providers by providing technical assistance in this area to help reinforce what we are doing while students are in school.

## An Example: A Student's Day When Learning in School

Here is an example journey of a 5<sup>th</sup> grade student named Jared. Please note, this scenario is used for example purposes only. Each student may have a different journey depending on their school, grade level.

### *Jared's School Journey During Face-to-Face Learning Days – 5<sup>th</sup> Grade Student*





#StopTheSpread

Sources:  
[www.who.int](http://www.who.int)  
[www.cdc.gov](http://www.cdc.gov)

# 10 things you can do to prepare for Returning back to school

## Practice Hand Hygiene

often throughout the day. teach them to sing their ABCs or have them count for at least 20 seconds ensuring they was front, back, and in-between their fingers.

## Update Immunizations/Physical.

Each are required to enroll for the school year. Contact your child's pediatrician for an appointment.

## Practice Putting Mask On/Off.

As per the Governor's Order, your child we be required to wear a mask to school. Teach them to not touch the inside of their mask when taking it off.

## Practice 6 ft of Distance

As per the Governor's Order, social distancing of 6 ft will be required in order for your child to take off their mask. Consider temporarily laying pieces of paper down for a visual.

## Purchase a Thermometer

Check your child's temperature every morning and upon return from school. If 100.0 or higher, they must stay home until fever free for 72-hours.

## Make/Purchase Extra Masks.

When possible, masks should only be used one time. consider making or buying multiple masks to give you proper time to wash them between use.

## Change Aerosolized Medication.

Nebulizers & inhalers without a chamber cannot be administered in school. Speak with your child's pediatrician to obtain the proper equipment and to notify the school nurse.

## Purchase Reusable Water Bottle

to be brought to school The District is in the process of replacing a majority of our water fountains with bottle filling machines to help mitigate the spread of the virus. We recommend that the water bottle have a straw for easy drinking.

## Verify/Update Emergency Contacts.

If your child presents with COVID-like symptoms, they will be placed in an isolation room and will be need to be picked up immediately.

## Stay Informed.

Educate yourself from reliable sources such as the CDC, Department of Health, and the World Health Organization.

